

Supporter of this event



westway.org

WEST  
WAY  
TRUST

የወላጆች ፈየር    معرض للوالدين

# Parents' Fayre

The Tabernacle, 34-35 Powis Square, London, W11 2AY

# Programme

Thursday 25th January 2024  
11am – 2pm and 5pm – 8pm



# Welcome, from the CEO of Westway Trust



Community events



Funding



Spaces to let



Childcare



Green spaces



Advice

Hello Everyone,

I am delighted to welcome you to Westway Trust's first Parents' Fayre.

With our strong and growing Adult Learning Programme, a diverse Supplementary Schools Programme and a much-needed nursery and crèche provision, this event reflects our Learning Team's commitment to support local families. This event came about because of unmet need, and importantly compliments what is already happening in North Kensington.

This Parents' Fayre will help to bring information and services together in one place, and in a user-friendly event. There are a host of experts to inform and support, as you explore the range of stalls.

Having gathered any information and advice of interest, please let us know what you think of our first Parents' Fayre. We aim for continuous improvement in our activities and your feedback will help to make the next fayre even better!

I hope you enjoy the event, and I look forward to meeting you at the Parents' Fayre.



Venu Dhupa

# Schedule of Presentations

## Morning/Afternoon

## Located in the Dance Studio

Time	Presentation
11:15	<p><b>Support, services and activities for families available in RBKC.</b> A presentation for parents of children of all ages, and those not in education, employment, or training.</p> <p><b>Facilitated by Early help and Family Hubs Services (RBKC)</b></p>
12:00	<p><b>How best to select and engage with schools, and colleges,</b> to get the best education for your child.</p> <p><b>Facilitated by Community Empowering Network</b></p>
12:45	<p><b>Let's talk about Special Educational Needs and Disabilities and what to ask for.</b> Your chance to hear from experienced schoolteachers and SENDco, then ask your questions.</p> <p><b>Facilitated by Kristian Parker and Maya Rushdie Mckenzie</b></p>
13:30	<p><b>Are you an expectant, or new, parent and want to know about local activities and support?</b> This presentation is by the Maternity Champions, for North Kensington, and can help with your questions and offer social activities with other new parents.</p> <p><b>Facilitated by Maternity Champions</b></p>

## Evening

## Located in the Meeting Room

Time	Presentation
17:15	<p><b>Support, services and activities for families available in RBKC.</b> A presentation for parents of children of all ages, and those not in education, employment, or training.</p> <p><b>Facilitated by Early help and Family Hubs Services (RBKC)</b></p>
18:00	<p><b>How best to select and engage with schools, and colleges,</b> to get the best education for your child.</p> <p><b>Facilitated by Community Empowering Network</b></p>
18:45	<p><b>Let's talk about Special Educational Needs and Disabilities and what to ask for.</b> Your chance to hear from experienced schoolteachers and SENDco, then ask your questions.</p> <p><b>Facilitated by Kristian Parker and Maya Rushdie Mckenzie</b></p>
19:30	<p><b>Are you an expectant, or new, parent and want to know about local activities and support?</b> This presentation is by the Maternity Champions, for North Kensington, and can help with your questions and offer social activities with other new parents.</p> <p><b>Facilitated by Maternity Champions</b></p>

# Directory of Exhibitors

## Change4Life 3

**Age range supported:** 0-19 years (or 25 years for young people with SEND)  
**Website:** [www.family-action.org.uk/what-we-do/children-families/change4lifeservice](http://www.family-action.org.uk/what-we-do/children-families/change4lifeservice)  
**Contact:** [richard.banks@family-action.org.uk](mailto:richard.banks@family-action.org.uk)



The Change4Life service is here to support expectant parents, children and young people aged 0-19 (or 25yrs for young people with special educational needs or disabilities (SEND)), and their families to eat well and keep active.

## The Children's Book Project 2

**Age range supported:** 0-18 years  
**Website:** [www.childrensbookproject.co.uk](http://www.childrensbookproject.co.uk)  
**Contact:** [tracy@childrensbookproject.co.uk](mailto:tracy@childrensbookproject.co.uk)



The Children's Book Project believes passionately that every child and young person should have the opportunity to choose and own their own books. We gift thousands of pre-loved and new books to families throughout RBKC each year, and work with family groups, schools, food banks and other settings across the borough.

We began 10 years ago at Barlby Primary School and are based on Golborne Road, so though we now work nationwide, we are committed to our local roots.

## Christ's Hospital 7

**Age range supported:** 11-18 years  
**Website:** [www.christs-hospital.org.uk](http://www.christs-hospital.org.uk)  
**Contact:** [hello@christs-hospital.org.uk](mailto:hello@christs-hospital.org.uk)



CHRIST'S HOSPITAL

A SCHOOL LIKE NO OTHER

Christ's Hospital is committed to providing a first-class education to talented boys and girls from all backgrounds by offering eligible parents/guardians means-tested financial support with the payment of school fees. Such support is known as a bursary.

Christ's Hospital is the UK's leading charitable school and the country's most generous bursary charity. Christ's Hospital provides free or substantially reduced cost places to over 630 of our 900 students each year.

## Cost-of-Living Crisis Clinic 8

**Age range supported:** parents  
**Website:** [www.westway.org/our-work/services/advice-service](http://www.westway.org/our-work/services/advice-service)  
**Contact:** [info@westway.org](mailto:info@westway.org)



The Cost-of-Living Crisis Clinic offers a form-filling service to members of the community. We help you to complete benefits

applications such as Universal Credit and the Personal Independence Payment, as well as housing forms for social and council housing.

## Community Empowerment Network 5

**Age range supported:** 5-16 years  
**Website:** [cenlive.org](http://cenlive.org)  
**Contact:** [info@cenlive.org](mailto:info@cenlive.org)



CEN offers guidance, support, and representation for parents. Educating, upskilling, and empowering you to proactively engage with the state education system, which effectively releases some of the burden not only from the parent but also from our schools. In instances where we lack capacity, we signpost parents to external organisations for additional support.

Our presentation will be about how best to select and engage with schools, and colleges, to get the best education for your child, within the state education system.

## The Dalgarno Trust 4

**Age range supported:** all ages  
**Website:** [www.dalgarnotrust.org.uk](http://www.dalgarnotrust.org.uk)  
**Contact:** [reception@dalgarnotrust.org.uk](mailto:reception@dalgarnotrust.org.uk)



\* See The North Kensington Youth Collective

## Education Otherwise 1

**Age range supported:** 5-18 years  
**Website:** [www.educationotherwise.org](http://www.educationotherwise.org)  
**Contact:** [enquiries@educationotherwise.org](mailto:enquiries@educationotherwise.org)



Education Otherwise is THE home education charity supporting every parent's right to choose the best form of education for their child. We believe that every child is different and equal.

# Directory of Exhibitors

## Family Hub 10

**Age range supported:** 0-19 years (or 25 years for young people with SEND)  
**Website:** [www.rbkc.gov.uk](http://www.rbkc.gov.uk)  
**Contact:** [childrencentrenorth@rbkc.gov.uk](mailto:childrencentrenorth@rbkc.gov.uk)  
 and

## Family Information Service 10

**Age range supported:** 0-19 years (or 25 years for young people with SEND)  
**Website:** [www.rbkc.gov.uk](http://www.rbkc.gov.uk)  
**Contact:** [fis@rbkc.gov.uk](mailto:fis@rbkc.gov.uk)



Family Hubs are a new way of bringing together all the support you may need as a family, from pregnancy through to young people turning 19 (or 25 if they have a disability). There is a children's centre in each of the Family Hubs with activities for very young children and a wide range of support for families with children of older ages.

The Family Information Service (FIS) can tell you what services are on offer for children, young people and families in Kensington and Chelsea.

## Harrow Club 4

**Age range supported:** 8 - 19 years (or 25 years for young people with SEND)  
**Website:** [harrowclub.org](http://harrowclub.org)  
**Contact:** [info@harrowclub.org](mailto:info@harrowclub.org)  
 0208 969 2528



*\* See The North Kensington Youth Collective*

## Libraries (RBKC) 11

**Age range supported:** All ages  
**Website:** [www.rbkc.gov.uk/libraries](http://www.rbkc.gov.uk/libraries)  
**Contact:** [northkensington.library@rbkc.gov.uk](mailto:northkensington.library@rbkc.gov.uk)



THE ROYAL BOROUGH OF  
 KENSINGTON  
 AND CHELSEA

North Kensington Library offers a range of activities and events for children of all ages, including Story Time, crafts, shared reading, games club, Baby Rhyme time and even a film club. We will have a range of our books with us and can support parents in exploring our resources. Plus Baby Rhyme Time, in the crèche space at 1.30pm!

## London Sports Trust 4

**Age range supported:**  
**Website:** [www.londonsportstrust.org](http://www.londonsportstrust.org)  
**Contact:** 0208 968 4500  
[info@londonsportstrust.org](mailto:info@londonsportstrust.org)



*\* See The North Kensington Youth Collective*



## The North Kensington Youth Collective: The Dalgarno Trust, Rugby Portobello Trust, London Sports Trust and Harrow Club 4



This champion partnership addresses the challenges children and young people face in North Kensington, mainly as we come out of the pandemic. While North Kensington has excellent youth programmes and good resourcing, there are high levels of need gaps in provisions. Pronounced local inequality, especially in educational attainment, housing quality, and access to mental health support.

As a collective, we are able to offer:

- Youth run community events
- Mental Health Support
- Serious Youth Violence Intervention and Prevention
- Sharing good practices and resources
- Youth Workers Pool

The long term benefits of The North Kensington Youth Collective are to:

- Enable more choice for young people in the range of provision
- Break down barriers created by 'postcode' and estate segregation in a safe and supported way
- Strengthen youth voice and coproduction of delivery
- Strengthen capacity and resources of partners
- Provide more staff training opportunities
- Provide more youth leadership opportunities
- Promote good practice in youth and community work through K&C Foundation

# Directory of Exhibitors

## The Rugby Portobello Trust 4

**Age range supported:** families  
**Website:** [www.rugbyportobello.org.uk](http://www.rugbyportobello.org.uk)  
**Contact:** 0207 229 2928  
[info@rpt.org.uk](mailto:info@rpt.org.uk)



\* See The North Kensington Youth Collective

## Targeted Prevention Team 9

**Age range supported:** 11-18 years  
**Contact:** [targetedprevention@rbkc.gov.uk](mailto:targetedprevention@rbkc.gov.uk)



The Targeted Prevention Team strives to help children at risk of NEET (Not in Education, Employment or Training) and young people who are NEET, to achieve their full potential in education, employment or training. Our service promises co-design and collaboration, bespoke, flexible support and interventions, which meet the individual's needs, together with our promotion of non-discriminatory language and access to opportunities for all.

## University of Westminster 6

**Age range supported:** 18+ years  
**Website:** [www.westminster.ac.uk](http://www.westminster.ac.uk)  
**Contact:** [outreach@westminster.ac.uk](mailto:outreach@westminster.ac.uk)

### UNIVERSITY OF WESTMINSTER

Our Student Recruitment & Outreach team can provide advice on Higher Education options for young people wishing to study at university, including our range of undergraduate degrees and degree apprenticeships. The University of Westminster offers a wide range of subjects taught at our five central London campus locations.

### (Speakers) Kristian Parker & Maya Rushdie Mckenzie

**Age range supported:** 5-11 years  
**Key SEND websites:** search 'SEND local offer at RBKC'  
[fulloflifekc.com](http://fulloflifekc.com)  
**Key contacts in RBKC:**  
[send@rbkc.gov.uk](mailto:send@rbkc.gov.uk)  
 0207 361 3311  
**Key contacts in Full of Life:**  
[familysupport@fulloflifekc.com](mailto:familysupport@fulloflifekc.com)  
[office@fulloflifekc.com](mailto:office@fulloflifekc.com)



Kris and Maya's talk will advise, and answers questions, on how to advocate for children with Special Educational Needs (SEN). They will share their experience on how to initiate communication with school staff, documenting specific challenges and proposing solutions during meetings. Information about the various diagnosis, signposting families

towards relevant laws and regulations, promoting/maintaining a positive outlook and how to go about seeking support from networks of parents or advocates.

### (Speakers) Maternity Champions (Kensington and Chelsea)

**Age range supported:** 0-2 years  
**Website:** [www.venturecentre.org.uk/maternity-champions](http://www.venturecentre.org.uk/maternity-champions)  
**Contact:** [carmella@venturecentre.org.uk](mailto:carmella@venturecentre.org.uk)  
 0208 960 3234

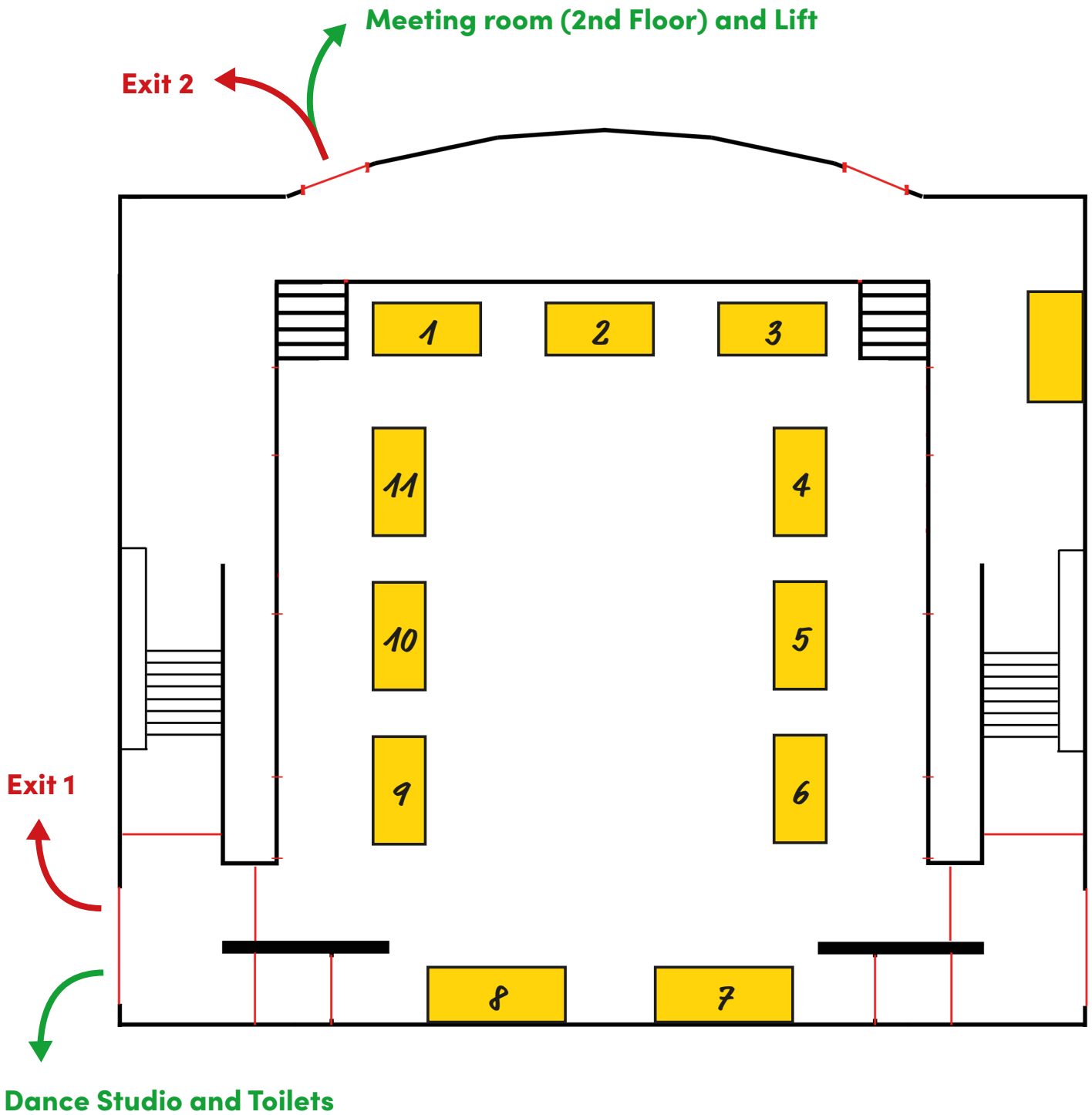


Our Student Recruitment & Outreach team can provide advice on Higher Education options for young people wishing to study at university, including our range of undergraduate degrees and degree apprenticeships. The University of Westminster offers a wide range of subjects taught at our five central London campus locations.

How do we get the school to listen?



# Map of Exhibitors



**The Tabernacle Theatre**



# My Notes...

---

---

---

---

---

---

---

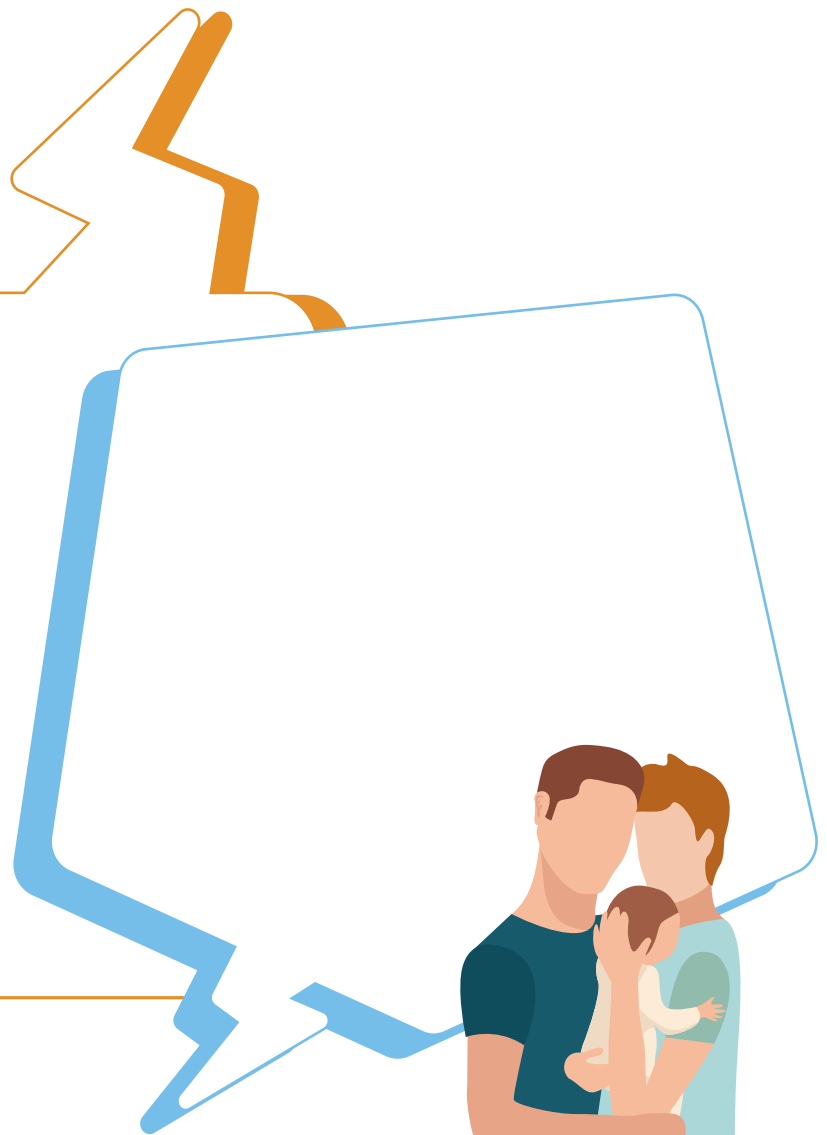
---

To do:

1.

2.

3.









YOUR FREE MUSIC EVENTS AT  
**THE TABERNACLE**

**EVERY MONDAY - 8PM**

**THE  
TABERNACLE  
QUARTET**  
*And Friends*

**EVERY TUESDAY - 8PM**



*The* **TABERNACLE**  
JAZZ • REGGAE • FUNK  
SOUL • CALYPSO • LATIN **CREW**

**EVERY FIRST FRIDAY OF THE MONTH - 7PM**

*Swing & Dine*

YOUR MONTHLY VINYL WITH VALVES DANCE

**FEATURING GUEST SELECTA &**  
**DAVID HILL (SOUL REVIVERS) SMOKEY JOE**

**34-35 POWIS SQUARE W11 2AY / 0207 221 9700**



[www.Lolalovedolls.com](http://www.Lolalovedolls.com)



## FREE COST OF LIVING CRISIS CLINIC

For those living in North Kensington

**A free service helping our community to make successful applications for:**

- Welfare Benefits
- Social Housing
- Lower Thames Water and Broadband tariffs
- Crisis Grants and general grants for you or your Family, (which do not need to be repaid)

**For an appointment to see an adviser, please:**

**Call 0300 102 8475, or**

**Visit 1 Thorpe Close, W10 5XL, or**

**Register online at [westway.org/cost-of-living](http://westway.org/cost-of-living)**



**WEST  
WAY  
TRUST**

## FREE APPEALS SERVICE

Free help, including representation with your appeal for:

Attendance Allowance

Disability Living Allowance

Employment Support Allowance

Personal Independence Payment

Universal Credit decisions about your ability to work (Personal Capability Assessment UC50 form decisions)



**NURSERY**



**FREE**

**15-30 HOURS  
FUNDED PLACES  
FOR 3-4 YEAR OLDS**

(From April 2024, this will include all 2 year olds  
Currently only free for low income families)

Top up sessions available if you need more than your allocated 15 hours at £8 per hour

**BOOK YOUR VISIT**



0774 124 8301



nicola.tedore@westway.org

**POP UP AT VENTURE CENTRE**

Venture Community Association, W10 5YB

