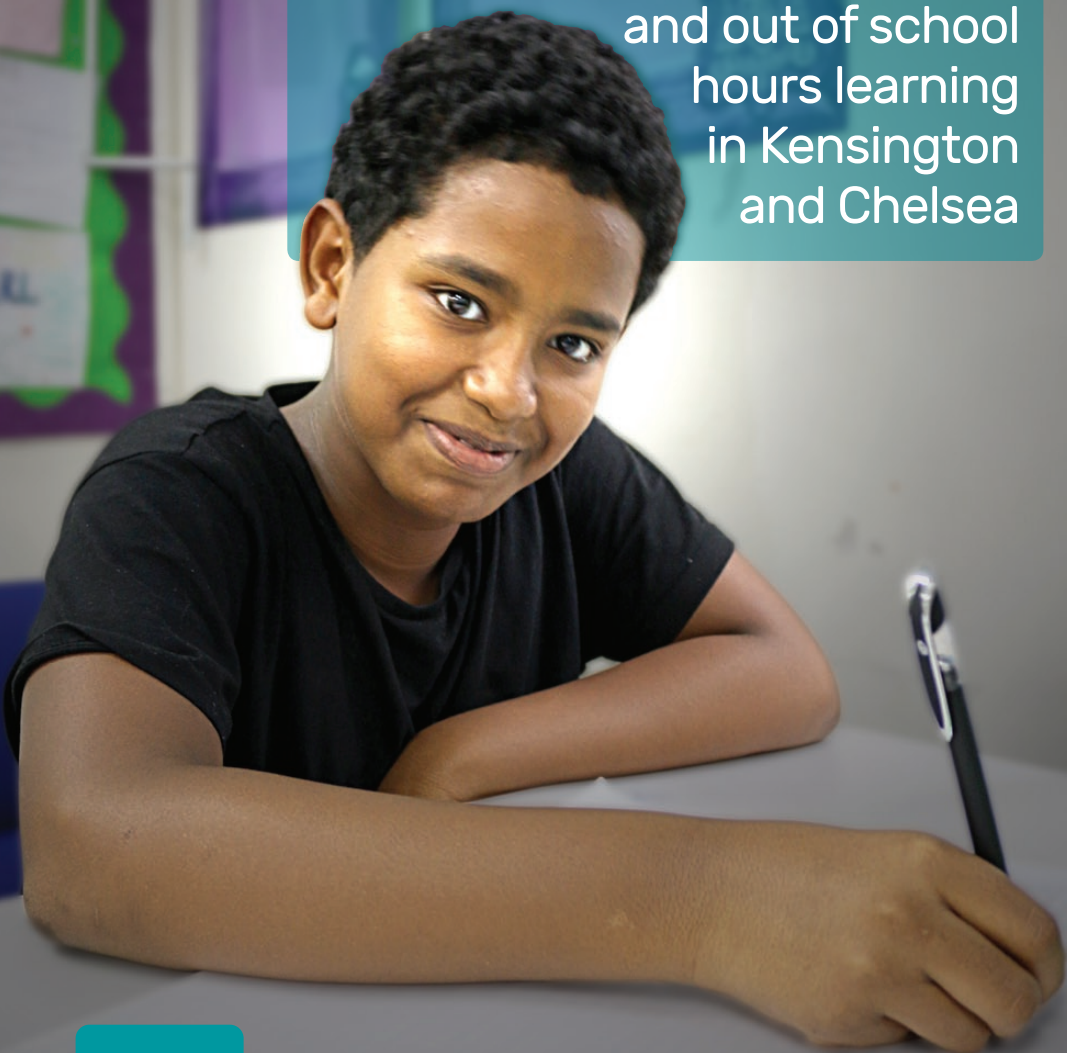


# Supplementary schools

and out of school  
hours learning  
in Kensington  
and Chelsea



**WEST  
WAY  
TRUST**

[www.westway.org/supplementary-schools](http://www.westway.org/supplementary-schools)



At Westway Trust we are proud to support supplementary schools in the fantastic work they do and we have produced this leaflet to provide useful up-to-date information about supplementary schools' education and other out of school hours learning providers in the Royal Borough of Kensington and Chelsea (RBKC). As well as a brief history of supplementary education in the borough there is information about the benefits that pupils and parents say they get out of it.\*

A directory of supplementary schools and other out of school hours provision, with a description of what's on offer, can be found on page 12. There is a map showing the location of each school on page 15.

## Learning without barriers

Supplementary schools offer extra tuition for pupils aged between 5-19 years. Meeting in term-time after mainstream school and at weekends, our schools are run by more than 18 community groups set up by parents throughout the Royal Borough of Kensington and Chelsea.

Our schools help young people to increase their understanding, improve their grades and, most importantly, build their confidence in learning. They offer formal revision and booster lessons in English, Maths and Science, as well as a range of other subjects not always taught in mainstream school, including: mother tongue languages, storytelling, drama, IT, cooking, music, trips away, sports and fitness, and arts and crafts.

Each school is unique and offers a range of opportunities according to the priority requirements of the pupils and their parents and the particular skill sets of teachers and staff.

Studying together brings many benefits – pupils from Gheez Rite Supplementary School.

In RBKC, community languages taught include Arabic, Georgian, Tigrinya, Albanian, Amharic and Kurdish. Some of our supplementary schools have developed an even wider range of services and offer youth services, parent support and expertise on FGM issues\*\*.

Supplementary schools are available to everyone, and anyone can attend, but we primarily offer places to those who can't access other forms of extra tuition.

Any supplementary school in the borough can join the Royal Borough of Kensington and Chelsea Partnership of Supplementary Schools. Follow the link to find out how to register your supplementary school.

[www.westway.org/supplementary-schools](http://www.westway.org/supplementary-schools)

"I like being in class with my friends ..."

\* Please note that although quotes are authentic, names to which they are attributed are pseudonyms to protect privacy.

\*\*Female Genital Mutilation



## History of supplementary education

The earliest supplementary schools in the UK, known also as community or complementary schools, can be traced back 150 years. In the modern era the first wave of supplementary schools were set up by the Black Education Movement in the 1960s. Their purpose was to provide extra support in mainstream subjects and to teach the history and culture of a minoritised community.

As new migrations of people arrived in the 1980s and 90s the movement expanded. There are now between 3,000 and 5,000 supplementary, complementary and madrasa schools in the UK\*, which provide a range of learning opportunities for children and young people under the age of 19 in addition to their mainstream education. They are primarily parent or community-led.

In Kensington and Chelsea in 1995 a consortium of supplementary schools was set up to apply for funding and to establish a partnership. The successful bid enabled Westway Trust to take on a coordinating role to support the partnership, which includes:

- organising bi-monthly meetings
- coordinating joint funding applications
- planning a schedule of training
- support with quality assurance
- bridging with other organisations to increase extra-curricular opportunities
- providing access to classrooms for training and for new supplementary schools to start up
- providing curriculum resources.

**"I think it taught me to be more sociable, it helps you. 'Cos a lot of people came from different primary schools. You make new friends and that is huge ... and you talk to a lot more people. So now at university it's easy to talk and make friends. I think the interaction with others is very important."**

*A past pupil*

The opportunity to study collaboratively in an open and realxed learning space improves pupils' attainment and develops wider skills – students at Baraka Community Association.



\*[www.nrcse.wpengine.com/supplementary-education-the-nrc](http://www.nrcse.wpengine.com/supplementary-education-the-nrc)



## Benefits of supplementary schools

Supplementary schools offer key benefits to both pupils and their communities. Above all they lay the foundations for children to progress in both mainstream school and later in their lives.

**“The volunteers are not that much older than you so they help you because they know how you feel, the pressure you feel when you get to Year 10, Year 11; they can help you.”**

*Ibraahin, Year 10 pupil*

### Improved learning

Our schools provide easy access to a wide range of resources not always available at home. When learning overlaps what is being studied in mainstream school children have more time and better opportunity to understand subjects. School homework becomes easier to tackle and new concepts less complicated to understand.

**“What I’ve been able to do through here is amazing. I’ve done so much stuff ... it’s built my confidence.”**

*Farouk, past pupil*

### Improved attainment

Supplementary Schools offer individual support and opportunities for one-to-one learning with volunteers from local universities. Children are thereby more able to move up sets in mainstream school. Extra-curricular activities enjoyed at supplementary school enhance other skills children will later need in the workplace such as teamwork and presentation skills.

**“Before, I used to get really low spelling and maths scores but since I’ve been coming here it’s now normally nines or tens.”**

*Gabriel, Year 5 pupil*

### Comfortable learning space

Supplementary schools provide classroom environments where children can feel confident and where their peers will not judge them. Learning with friends provides children with the opportunity to study in a collaborative way and encourages the development of wider skills.

Individual mentoring and one-to-one learning in action at Baraka Community Association.



## Development of wider skills

Many of the activities help children and young people develop the knowledge, attitudes, skills and behaviours necessary to thrive in today's interconnected world, such as problem solving, collaboration and communication.

**"You gain many things from here; if I hadn't come here I would have still been a very shy person, so it also builds your confidence."**

*Ayoub, Year 6 pupil*

## Community cohesion

Supplementary schools allow children to develop friendships outside mainstream school and with other children from outside their immediate area or neighbourhood.

It is also more likely that older, ex-pupils will stay connected to their communities through activities such as volunteering.

Supplementary schools help children understand their role in society and provide links to many other organisations.

## Identity

Teaching children about the culture, community or faith in which they live provides them with the sense of belonging to their community or extended family and helps children understand how their cultural identities fit into wider society. It makes for self-confident children with a firmer sense of ethnic identity, which can be both hybrid and fluid.

**"Lots of people come in from different areas and different cultures ... so you get to interact with different religions and age groups and to learn how they socialise."**

*Group interview*

**"I've seen a difference in the way I understand English. Now I understand it more and I enjoy going ... and I've seen a difference in my levels at (mainstream) school."**

*Ibraahin, Year 10 pupil).*

Friendships developed outside mainstream school can transcend social and cultural boundaries. Here pupils from First Georgian Supplementary School entertain the community.



## What young people say ...

Pupils have said that the supplementary school environment allows them to be able to express themselves, ask questions and access individual support away from the distractions of home, such as television, phones and siblings. Young people have emphasised that friendship and having a safe learning space are important motivators and have a positive impact on learning and attainment.

**"The teachers know a lot ... and they help us."**

**"It's not like day school. You can be yourself here and you can feel safe."**

**"I do four or five different subjects there."**

**"If you know the friends you have there and the staff you're working with and you're comfortable you don't mind getting something wrong because you know you have people to help you there."**

Group interview

Children can enjoy other activities such as arts, crafts and gardening as demonstrated at Pimento Community Project.

**"We get fun stuff to do."**

The great outdoors ... supervised activities in the Ashdown Forest on the annual summer residential.

## Case study

Mustapha accessed an opportunity to volunteer at the British Museum through his supplementary school. He describes the impact of working in the museum:

**"It helped me a lot in terms of how I get along with others, meeting people I've never met before."**

For Mustapha the experiences of volunteering at a world-class museum have developed his cultural capital through an improvement in self-confidence. The opportunity to put this experience onto his CV is likely to support his progression further.

## Out of school ...

Many supplementary schools visit Hindleap Warren Outdoor Activity Centre, based in the Ashdown Forest in the heart of the East Sussex countryside.

Residentials are held over two to four days during school holidays and offer participating children and young people a range of supervised outdoor activities such as high-wire, forest skills, climbing and abseiling.



# Directory of out of school hours learning

## 1 Al-Amaana Supplementary School



Saturday 10am-3pm  
All Saints Catholic College,  
75 St. Charles Square, London W10 6EL  
Primary & Secondary 6-14 yrs.  
Arabic, Maths, English and Science  
Extra activities: Boys & girls clubs inc. football,  
boxing, Youth Centre, 19 Golborne Road,  
London W10 5NY  
For adults: Parenting programmes  
& mothers' coffee mornings.  
Email: info@mcwg.org.uk www.mcwg.org.uk

## 2 Almanaar Arabic School

Sunday 9am-1.30pm  
MCHC Almanaar, 244 Acklam Road,  
London W10 5YG  
Primary & Secondary 4-15 yrs. Arabic  
Tel: 07476 555 868

## 3 Al Basheer Saturday Arabic School

Saturday 10am-3pm  
Oxford Gardens Primary School,  
Oxford Gardens, London W10 6NF  
Primary & Secondary 5-17 yrs.  
Arabic to GCSE level  
Tel: 07403 344 178 / 07469 238 229  
Email: albasheersatschool@yahoo.com

## 4 An-Nisa Community Empowerment

Primary 5-11 yrs.  
Arabic: Saturday & Sunday  
9.30am-12.30pm & 1-4pm  
Earls Court Community Trust (ECCT)  
1A Nevern Place, London SW5 9NR  
Maths & English: Wednesday 4-7pm  
Chelsea Theatre, 7 World's End Place,  
King's Road, London SW10 0DR  
Extra activities: Boxing, Wednesday 4-5pm  
& 5-6pm, Chelsea Theatre  
Coffee mornings, Wed 9-11am, (subject to  
change), Earls Court Community Trust  
Contact: Sana Elomari 07957 451 667  
Email: anisagroup@outlook.com

## 5 Arabic School of Arts & Language

Saturday 10am-1pm (term-time only)  
Chelsea Academy, Lots Road,  
Chelsea, London SW10 0AB  
Primary & Secondary 3-16 yrs.  
Arabic to GCSE level & Art  
Contact: Ouma Alemadi 07595 183 147  
Email: solebanon@hotmail.co.uk

## 6 Azza Supplementary School



Saturday 10am-3pm (term-time only)  
Primary & Secondary 6-16 yrs.  
Kensington Aldridge Academy, 1 Silchester Rd.,  
London W10 6EX (Community entrance)  
Arabic, English, Maths, Science, Culture Studies,  
GCSE /A Level Arabic  
Contact: Mona Deyab 07957 184 601  
or Sara Gadin 07944 361 619  
Email: azzsupplementaryschool@gmail.com

## 7 Baraka Community Association



Monday & Wednesday 5.30-7pm  
Saturday 2.30-4.30pm  
Canalside House, 383 Ladbroke Grove,  
London W10 5AA  
Primary & Secondary 6-16 yrs.  
Maths, English, Science  
For adults: Parenting skills & exercise classes  
Contact: Abdullahi Ali  
Tel: 020 8964 0606 or 07949 727 322  
Email: barakayouth@tiscali.co.uk  
www.barakacommunityassociation.com



## 8 Dadihiye Supplementary School

Friday 5-7pm  
Supplementary Schools Resource Centre,  
7 Thorpe Close, London, W10 5XL  
Primary 5-11 yrs. Maths & English  
Contact: Dahabo Essa  
Tel: 020 8960 4133  
Email: dahabo.isse@dadihiye.co.uk  
www.dadihiye.org.uk

## 9 Dalgarno Supplementary School



Saturday 10am-3pm  
Kensington & Chelsea College,  
Worrington Road, London W10 5QQ  
Primary & Secondary 5-16 yrs.  
Arabic, English. Extra activities: Maths &  
English, Mon & Wed 4-7pm, SSRC, Football,  
Fri 4-6pm WSC. Contact: Mohamed Benrahma  
Tel: 07950 421 845  
Email: dalgarnoschool@yahoo.co.uk  
www.dalgarnosupplementaryschool.org.uk

## 10 Eritrean Parents & Children's Association



Saturday 9.30am-3pm  
Golborne Youth Centre,  
2A Worrington Road, London W10 5QW  
Primary & Secondary 5-18 yrs.  
English, Maths, Arabic, Science  
Extra activities: Art, Drama & Taekwondo  
Contact: Jamal Ibrahim & Saeed Abdulrahman,  
Tel: 020 8964 5535  
Email: epcaschool1@gmail.com  
or zbest1123@gmail.com

## 11 Ethiopian Women's Empowerment Group

Latymer Christian Centre,  
116 Bramley Road, London W10 6SU  
Primary & Secondary 5-16 yrs.  
Homework Club. Call the Centre for times  
Tel: 020 8969 2608  
Extra activities: Computer & English classes  
& coffee morning, Tuesday 9-11am  
Contact: Senait Eyob  
Email: eweglondon@gmail.com  
www.eweg.org.uk

## 12 First Georgian Supplementary School

Saturday 10am-2pm  
Latymer Christian Centre (1st Floor),  
116-118 Bramley Road, London W10 6SU  
Primary & Secondary 3-16+ yrs.  
English, Maths, Science, GCSE Science &  
English, History, Georgian language, History,  
Georgian Dance, Breakdance, Music  
Extra activities: Folk art club. First Georgian  
provides immigration advice in collaboration  
with Armazi Legal Immigration company.  
Contact: Liana Jikia-Gogritchiani  
Tel: 020 8964 0184 / 07865 044 805  
Email: gogritchiani@aol.com

## 13 Gheez Rite Supplementary School

Saturday 10am-2.45pm  
All Saints Catholic College,  
75 St. Charles Square, London W10 6EL  
Primary & Secondary 5-16 yrs.  
Tigrinya, English, Maths, Science  
Extra activities: Football training & tournament,  
Saturday 3-5pm Westway Sports Centre  
Contact: Rev. Kidane Lebas  
Tel: 07961 282 267  
Email: gheezrite@googlemail.com

## 14 Into University North Kensington

Primary: Tuesday, Thursday & Friday  
3.30pm-5pm  
Secondary: Monday & Wednesday 4-5.30pm,  
Friday 3.30-5pm  
The Clement James Centre, 95 Sirdar Road,  
London W11 4EQ  
Primary & Secondary 7-18  
Homework, coursework support, mentoring,  
summer arts programme  
Tel: 020 7221 8801  
Email: youngpeople@clementjames.org

## 15 Midaye School

Tuesday 5-8pm & Thursday 4-5.30pm  
Supplementary Schools Resource Centre,  
7 Thorpe Close, London W10 5XL  
Primary & Secondary 5-16 yrs.  
Maths, English, Science  
Contact: Idil Hassan, Tel: 020 8969 7456  
Email: idil@midaye.org.uk  
www.midaye.org.uk



## 16 Pimento Community Project

Monday-Friday 4.30-6.30pm  
Saturday 10am-3pm  
All Saints Notting Hill,  
28 Powis Gardens, London W11 1JG  
Primary & Secondary 5-18 yrs. & Adult  
English, Maths, Science  
Contact: Doreen Davis MBE  
Tel: 020 7243 3066 / 07534 241 268  
Email: ddavis\_pimento@hotmail.com

**17 Prospects Kensington Ltd.**  
The P. Jeffrey Academy of  
Higher Achievement

Saturday 12-2.30pm  
Swinbrook Community Centre,  
145 Acklam Road, London W10 5YX  
Primary & Secondary 8-18 yrs.  
English, Maths, IT & GCSE & A Level  
support in Maths, English & Science  
Contact: Joanna Edwards  
Tel: 020 8969 1777  
Email: prospectsgrove@hotmail.com  
www.prospectskensington.weebly.com

**18 Response Computer &  
Homework Club**

Monday-Thursday 3.30-5.45pm  
Response Community Projects, 300 Old  
Brompton Road, London SW5 9JF  
Primary & Secondary 8-16 yrs.  
Homework, Maths, English, Science, IT Quiss  
Established Status  
Contact: Linda Ogbuehi, Tel: 020 7370 4606  
Email: info@responseprojects.org.uk  
www.responseprojects.org.uk

**19 Rugby Portobello Trust**

Monday-Friday 3.30-10pm  
221 Walmer Road, London W11 4EY  
Primary & Secondary 5-25yrs.  
Post 16 yrs. & Adult  
Homework Club, Youth Club, Junior Club,  
Football Academy  
For adults: Magic Mums, New homes team  
Tel: 020 7229 2928  
Email: info@rpt.org.uk  
www.rugbyportobello.org.uk

**20 Somali Women's  
Association**

Saturday 10am-2pm  
Canalside House 383 Ladbrooke Grove, London  
W10 5AA  
Primary & Secondary 5-16 yrs.  
English, Maths, Science.  
For adults: Parenting program (SFSC)  
10am-2pm, Venture Community Assoc., 103a  
Worlington Rd, London W10 5YB  
Contact: Khadra Said, Tel: 07507 112 580  
Email: somaliwomens@hotmail.co.uk



**21 Teit Ethiopian Orthodox Tewahedo  
Supplementary School**

Saturday 1-5pm  
The Space, 214 Freston Road,  
London, W10 6TT  
Primary 5-11 yrs.  
Amharic, Maths, English & EOT  
Contact: Tiemar Temesgen  
Tel: 07985 268 150  
Email: teitethiopia@gmail.com

**22 West London Turkish School**

Sunday 10.30am-2pm  
Oxford Gardens Primary School,  
Oxford Gardens, London W10 6NF  
Primary & Secondary 3-16+ yrs.  
Turkish, Maths. For adults: Turkish  
Contact: Funda Unal Evans  
Tel: 07908 433 197  
Email: info@westlondonturkishschool.org.uk

**23 WSHA**

Saturday 10am-4pm  
Supplementary Schools  
Resource Centre, 7 Thorpe  
Close, London W10 5XL  
Primary & Secondary 5-16 yrs.  
Kurdish, English & Maths  
Contact: Soza Faraj  
Tel: 07842 395 774  
Email: sozafraj@yahoo.co.uk

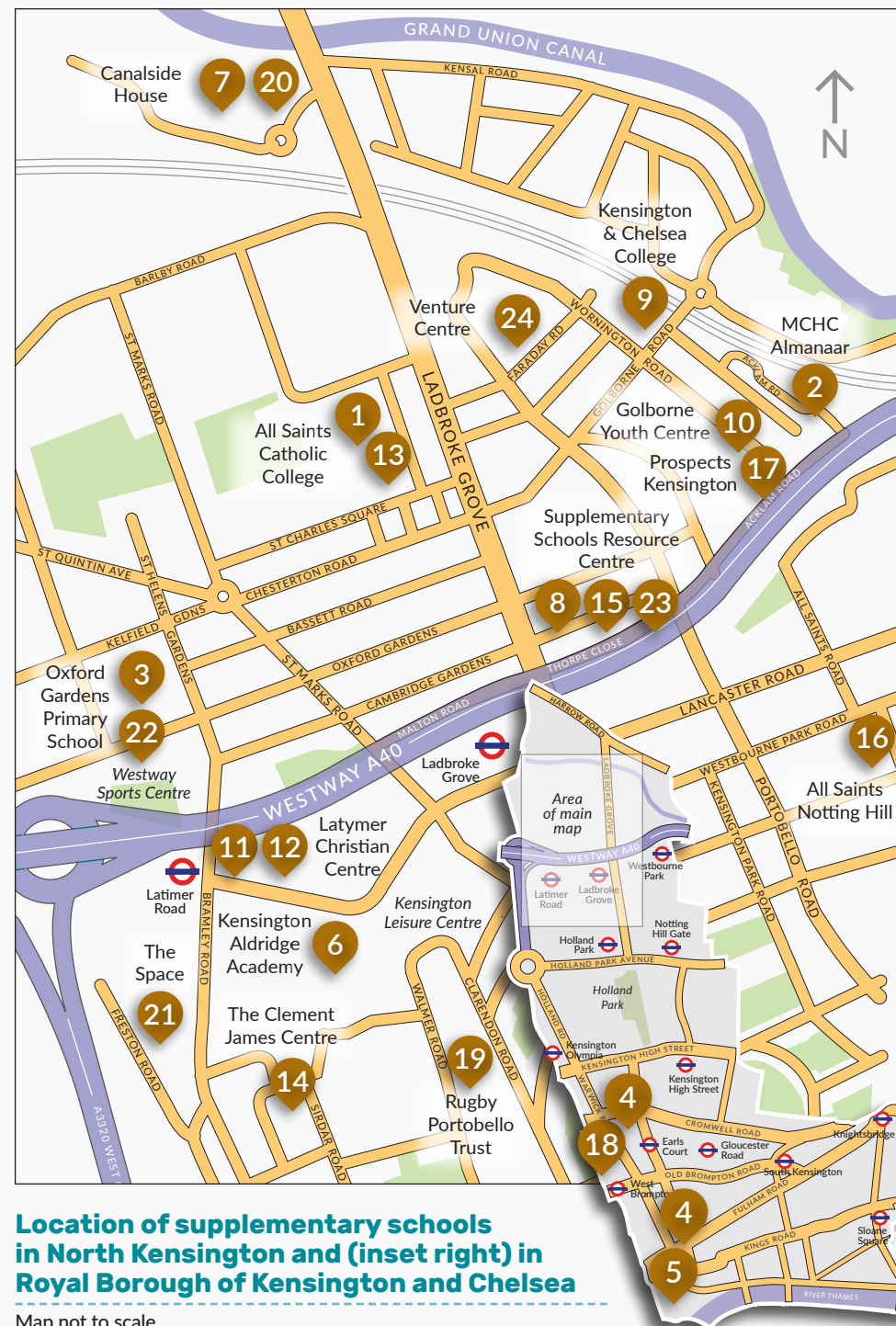


**24 Venture Community Association**

Wednesday 4-6pm  
Venture Community Association,  
103A Worlington Rd, North Kensington,  
London, W10 5YB  
Primary & Secondary 6-14 yrs.  
Maths, English, Science, History, Arabic, but  
mostly core subjects  
Extra activities: Children & young people have  
access to a wide range of resources including IT  
facilities to enhance learning experience.  
For adults: Community & Maternity Champion,  
check website for details.  
Tel: 020 8960 3234  
Email: david@venturecentre.org.uk  
www.venturecentre.org.uk

**Abbreviations used in directory and on map**

MCHC: Muslim Cultural Heritage Centre  
SSRC: Suuplementary Schools Resource Centre  
WSC: Westway Sports Centre



**Location of supplementary schools  
in North Kensington and (inset right) in  
Royal Borough of Kensington and Chelsea**

Map not to scale





## Partnerships

A range of partnerships with other organisations increases access to wider opportunities for children and young people in supplementary schools. Recent partnerships have been with the V&A, Imperial White City, Design Museum, Hindleap Warren Activity Centre, Mousetrap Family First Nights, MIND, EPIC among others.

## NRCSE

The National Resource Centre for Supplementary Education (NRCSE) is a national strategic and support organisation for community-led supplementary schools and the wider supplementary education sector across England. The NRCSE award a Quality Mark to supplementary schools which fulfil qualifying criteria such as safeguarding, health and safety, child protection and effective teaching and learning.

[www.nrcse.wpengine.com](http://www.nrcse.wpengine.com)



## Westway Trust

Val Patterson  
Associate Director  
Education Services  
[val.patterson@westway.org](mailto:val.patterson@westway.org)  
Tel: 07917 575012

Muna Ali  
Coordinator  
[muna.ali@westway.org](mailto:muna.ali@westway.org)  
Tel: 07701 360 233

Gigi Yacoub  
Adult Learning  
Outreach Officer  
[gigi.yacoub@westway.org](mailto:gigi.yacoub@westway.org)  
Tel: 020 8962 5741

Joanna Atogdina  
Grenfell Support Coordinator  
[joanna.atogdina@westway.org](mailto:joanna.atogdina@westway.org)  
Tel: 07824 141412

## Current funding bodies

Westway Trust  
The Royal Borough of  
Kensington and Chelsea  
John Lyon's Charity

Left top: A pupil from Dadihiye Supplementary School. Left: An EPCA classroom. Above: students enjoying summer residential week. Cover: A pupil from Gheez Rite Supplementary School.



JOHN LYON'S CHARITY

[www.westway.org/supplementary-schools](http://www.westway.org/supplementary-schools)